



Site : "Aaryan Eminent", Off S. G. Highway, Opp. Kargil petrol pump, Chhatodiya bridge road, Sola, Ahmedabad - 380061, Gujarat, India.

[www.aaryanbuilders.com](http://www.aaryanbuilders.com)



“Eminent Infracon”

"AARYAN EMINENT", Beside Aaryan Bungalows, Near Ganesh Meridian, Opp. Kargil Petrol Pump, Off S.G. Highway, Ahmedabad-380061, India  
Mb.: +91 9099090818 - Tele: 079-65242504 - Email: [info@aaryanbuilders.com](mailto:info@aaryanbuilders.com) - Website: [www.aaryanbuilders.com](http://www.aaryanbuilders.com)

Mb.: + 9825041409  
[www.3dandgraphicdesigner.com](http://www.3dandgraphicdesigner.com)

## Developers

We aim to shape this vibrant city with structures that are furnished with the best amenities and stand on strong structural foundations. Having worked with some of the best architects has nurtured our ability to imagine outcomes and devise more adaptive strategies. When we first envisioned Aaryan Eminent, we wanted it to be brilliant by design and also accommodate luxury, accessibility and convenience. Powered by the perseverance of diverse professionals working constantly to realize our vision, Aaryan Eminent will stand a re-imagined living experience unlike any other.



### “Eminent Infracon”

Ahmedabad.

Phone : +91 9099090818, 079-65242504  
Email : info@aaryanbuilders.com  
Website : www.aaryanbuilders.com

## Architect

Aesthetic integrity and innovative thinking is the backbone of our design process and in every endeavour that we undertake. Our designs are more crafted than plotted, bringing together a unique blend of architectural excellence and human sensibility. Aaryan Eminent is our vision of art by design. From the beginning, we wanted to create warm and inviting high-rise homes. By taking a step back, and really looking at the process from up above, we were able to re-imagine Eminent as a luxury living experience, furnished with lavish spaces, equipped with modern amenities and decked lush landscapes. Both inside and out, Eminent has been designed by us with passion and precision and is the epitome of an ergonomic and thoughtful design process. constantly to realize our vision, Aaryan Eminent will stand a re-imagined living experience unlike any other.

Architect



Ar. Tanmay Prajapati  
**kuke Associates – Architects**  
Ahmedabad.  
Mobile: +91 9924400107

Interior designer and  
Landscape consultant :

Kuke associates

Structure engineer :  
**Shreeji structurals**  
Ketav Joshi  
PH:- (079) 26748313.

Electric , utility and hvac consultant :  
**Aqua Utility Designs and Management Pvt. Ltd.**  
Dipen Mehta  
Phone: 91 79 65442785





Find the paradise on earth,  
straight out of your  
dreams homes you  
always wanted to own.



**AARYAN**  
eminent  
3&4 - bhk luxurious flats

Like a shining star,  
"Aaryan eminent"  
would help your lifestyle  
elevate and take you  
to the leagues of the  
extraordinary...

Luxury is attention to detail,  
originality,  
exclusivity and above all quality.



## Common Amenities :

- Contemporary entrance area with security cabin which provides 24 hours security system with intercom and surveillance camera on gate .
- Lush green tree lined wide roads with street lights and well landscaped garden areas
- Well designed entrance water body
- A clubhouse with the facilities of multipurpose hall (aerobics, meditation, yoga, indoor games, meeting place) and well equipped gymnasium.
- Designer entrance foyer.
- Outside children play area
- Specified lush green sitouts for elders

# AARYAN eminent all plan presentation

384 - bhk luxurious flats

## key plan



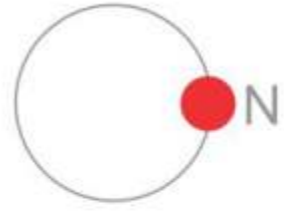
## Specifications:

Structure :.....	Earthquake resistant R.C.C. frame structure for safety aspects
Exterior finish :.....	Double coat sand faced plaster with weather proof premium acrylic emulsion exterior paint.
Door windows :.....	Main veenered door & other laminated doors with standard S.S. fittings and wooden frames. Sliding anodized high quality aluminium windows.
Floor :.....	Premium quality vitrified floor in all areas. Rustic tiles in balcony and wash. Granite in staircase
Kitchen :.....	Polished granite platform top with premium quality s.s. sink Designer glazed tiles cladding upto lintel lvl.
Electrification :.....	Concealed 3 phase isi copper wiring with modular switches and mcb distribution panel to ensure safety. Ample electric points in all areas. Provision of geyser points in bathrooms
Interior finish :.....	Inside double coat mala plaster with cement base lapi putty coating (ready for paint).
Bathrooms & plumbing:.....	Concealed cpvc/ppr pipes with premium quality accessories of renowned make. Designer tiles upto lintel lvl. with anti skid leak proof floor. Marble/granite counter & wall hung w.c. in all bathrooms. Standard quality sanitary ware (equivalent to cera). Standard quality (equivalent to jaquar/ plumber) C.P.fittings.
Water supply :.....	Borewell with hydro pneumatic pressure system for 24 hours water supply.
Terrace :.....	China mosaic flooring to ensure water proofing and reduce heat transfer.

### Notes

- No external changes shall be permitted.
- Internal changes will be permitted with prior permission and shall be charged extra in advance.
- Every care has been taken in preparation of the particulars contained in this brochure, which are for guidance only. They do not form the basis of any contract. Variations may occur due to local regulations and our policy of constant improvement.
- Member shall abide by the changes in design, area and specifications, if made to comply with the statutory regulations and advise from architect.
- All rights reserved by developer for any changes in scheme.
- Stamp duty, Registration charges, other legal expenses, AMC charges, Torrent power charges including cable cost, sub-station cost, service tax or any govt. tax shall be borne by the members separately extra.

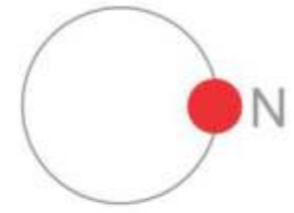
Ground floor plan



AARYAN EMINENT PHASE 2

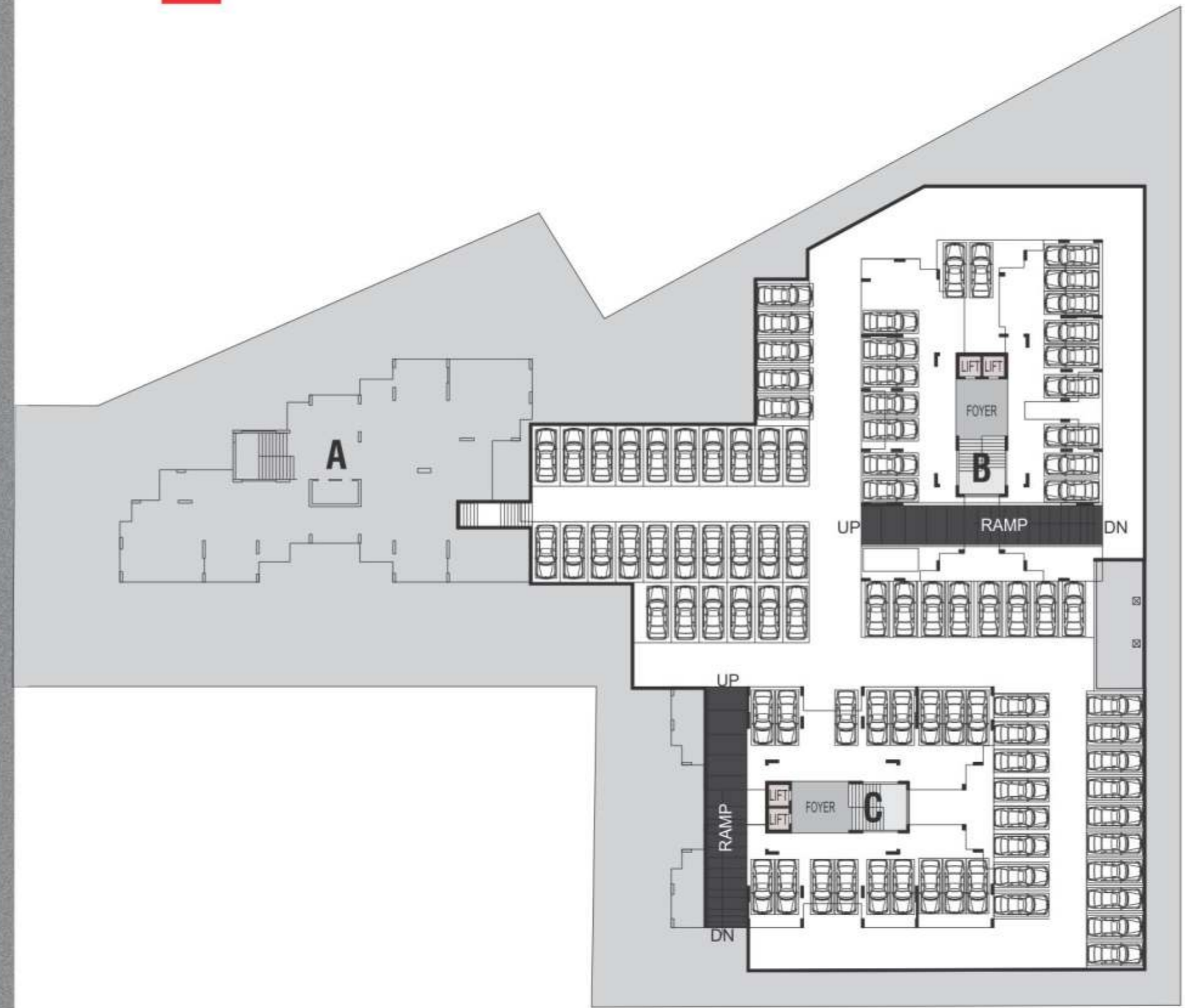
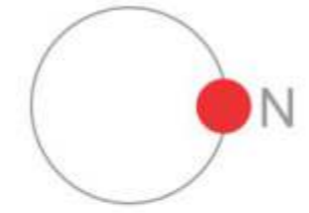


# Typical floor plan



AARYAN EMINENT PHASE 2

# Basement parking plan







A - Type  
4- BHK  
Typical unit plan

A - Type  
4 BHK  
Upper penthouse plan



A - Type  
4 BHK  
Lower penthouse plan

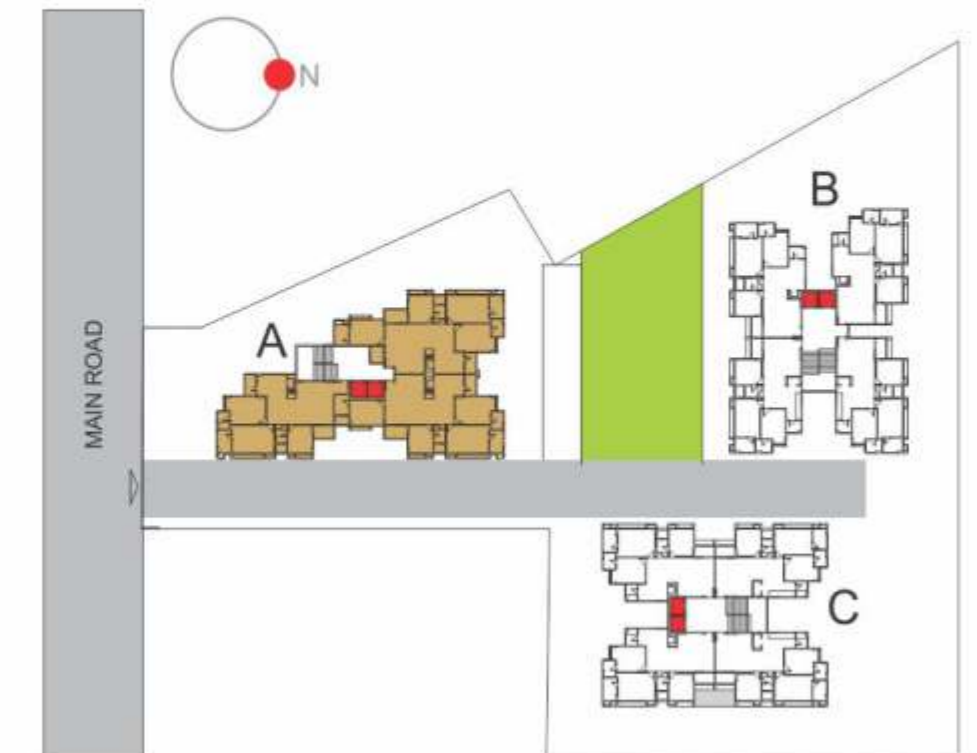


**A - Type**  
 3- BHK  
 Typical unit plan

DRG. NAME : BLOCK - A TYPICAL FLOOR PLAN



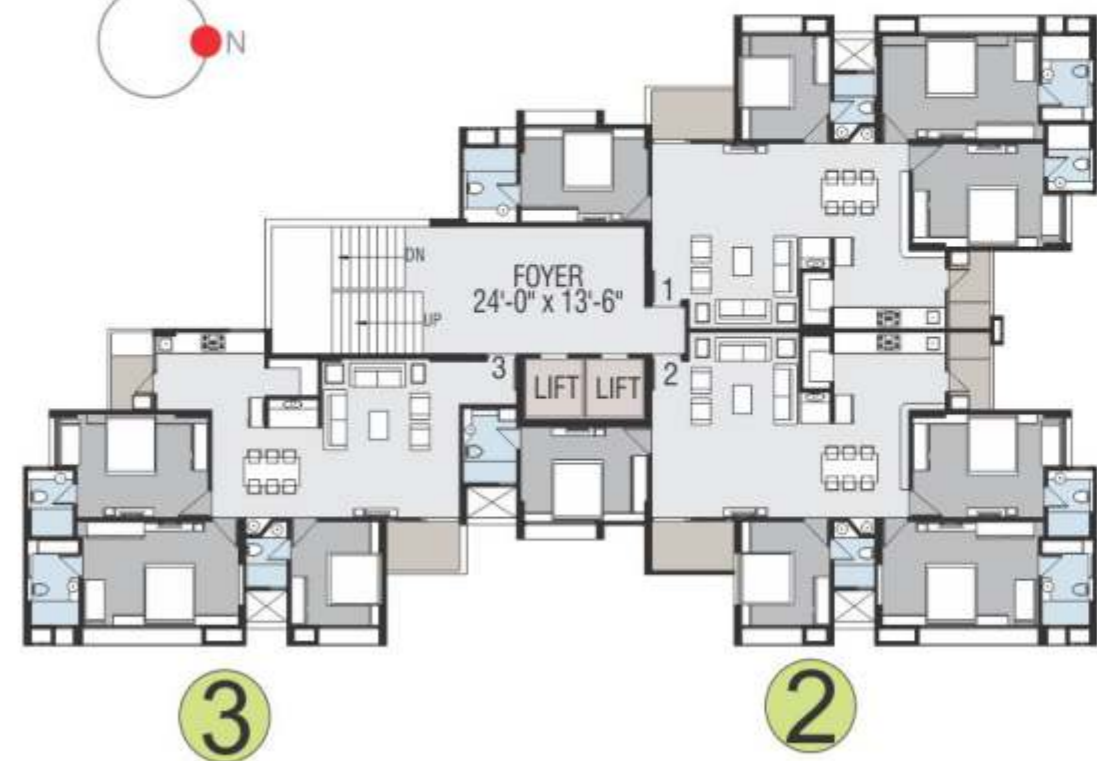
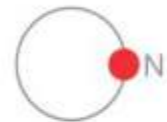
Site plan

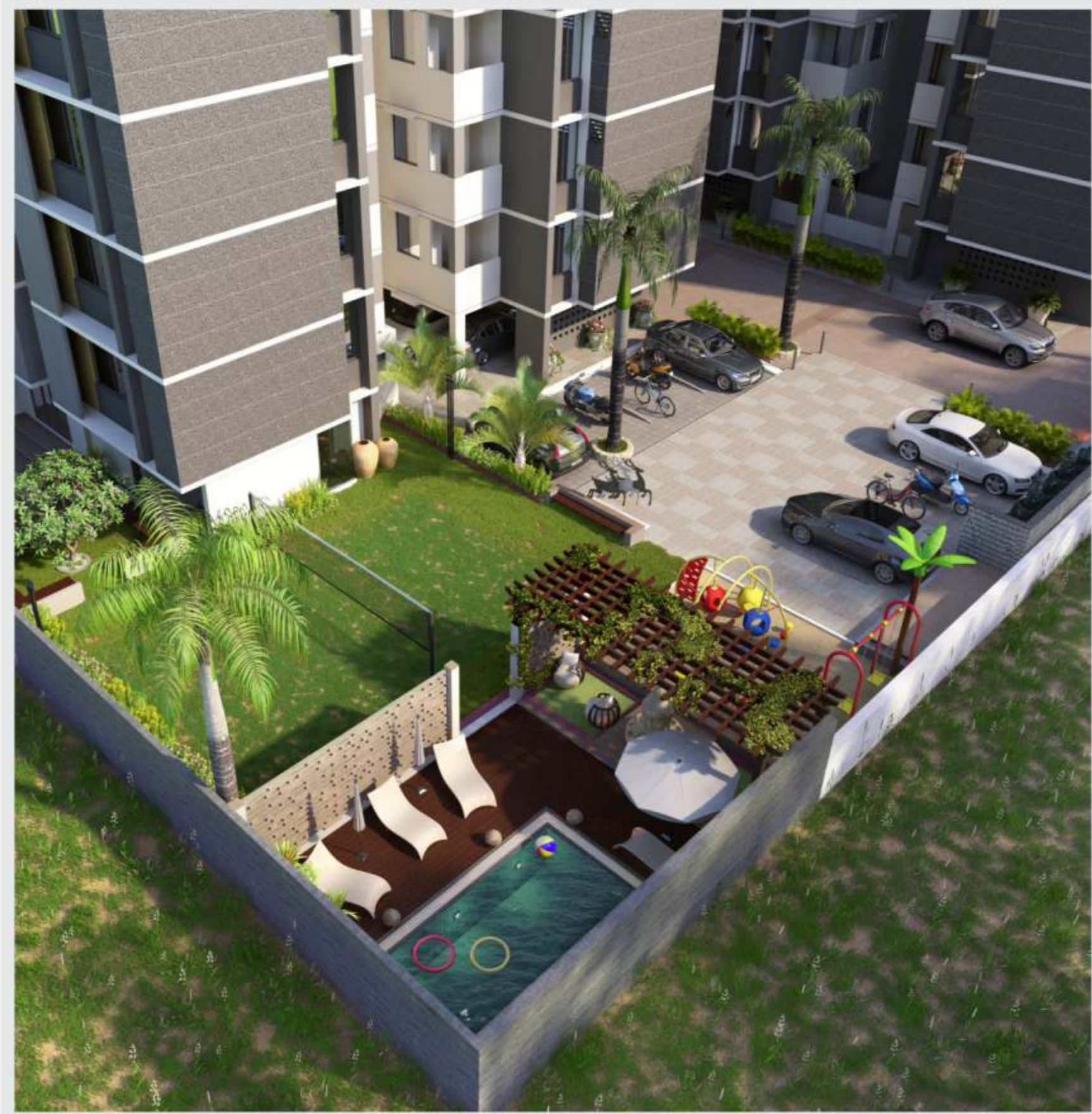


**A - Type**  
 4 - BHK  
 Typical unit plan



**A - Type**

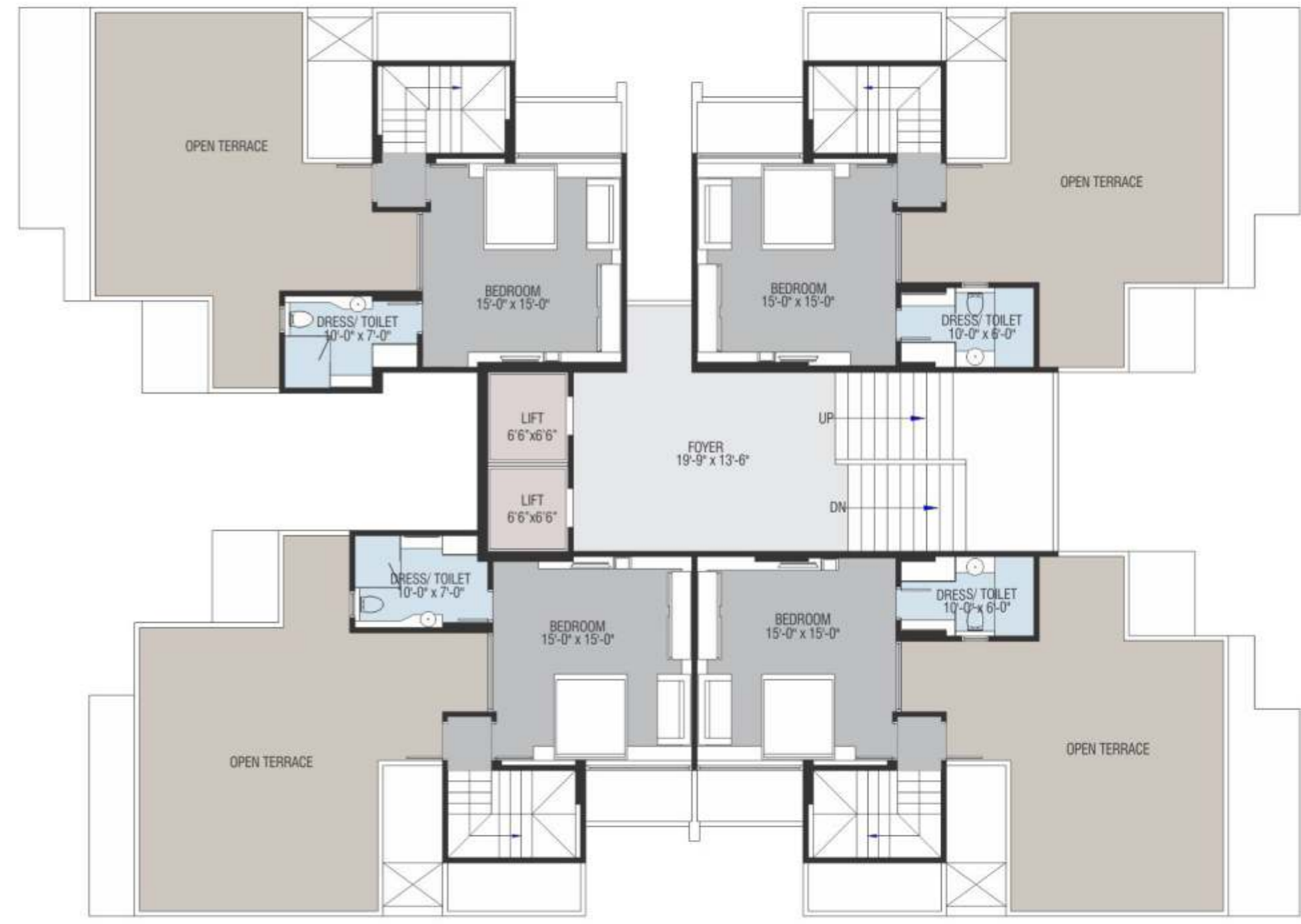




**B - Type**  
 3 BHK  
 Lower penthouse plan



**B - Type**  
 3 BHK  
 Upper penthouse plan



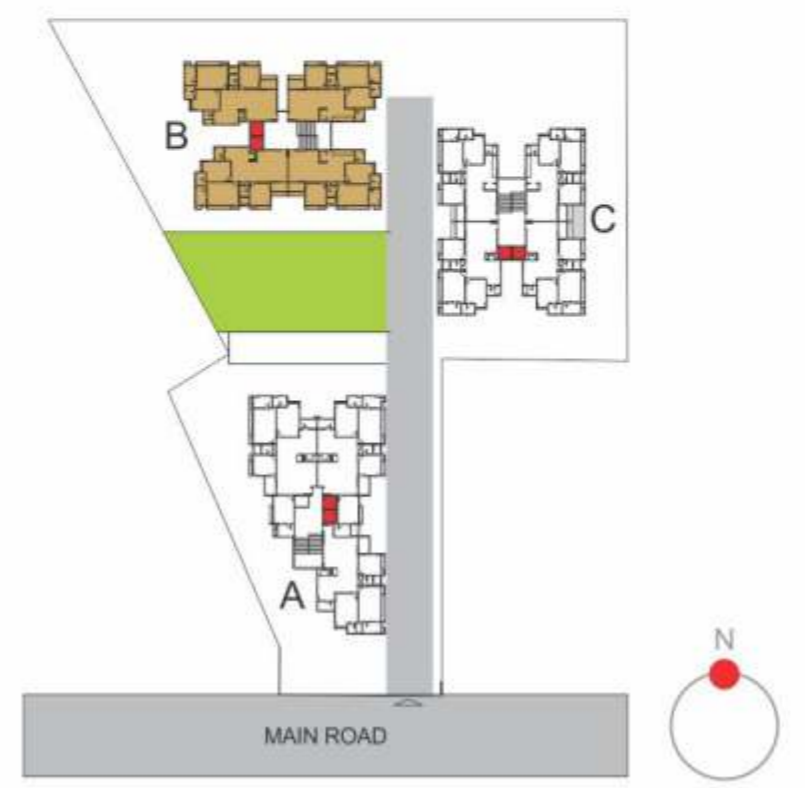


**B&C - Type**  
 3- BHK  
 Typical unit plan

DRG. NAME : BLOCK - B TYPICAL FLOOR PLAN



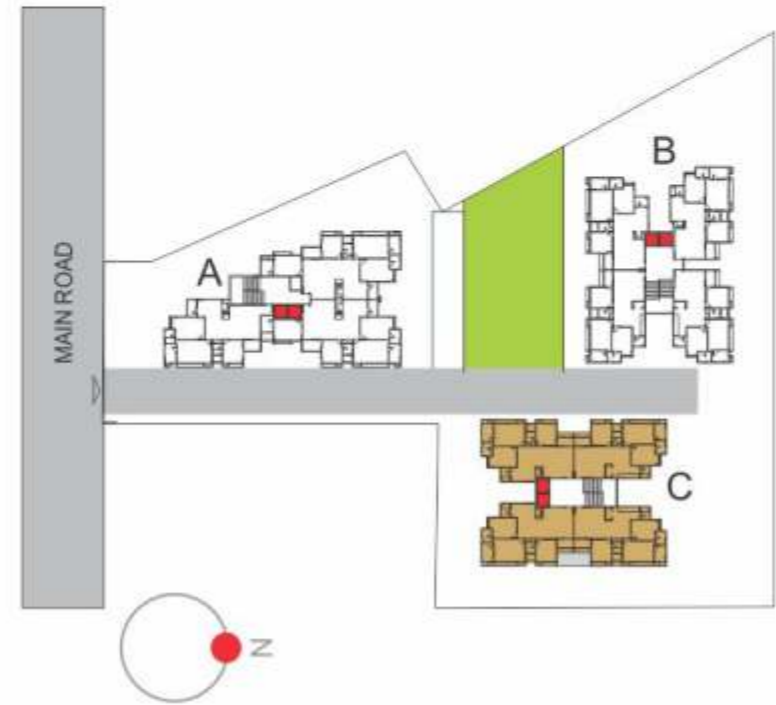
Siteplan



B - Type



# Siteplan



**C&B - Type**  
3- BHK  
Typical unit plan



# C - Type





A -Type  
3- BHK  
Typical unit plan



Designer spacious landscaped area.



Designer entrance foyer.