

aaryan
Embassy
Life spaces with 3BHK



COLOURS OF LIFE

We are all the colors of life and we live together in harmony to make this world more beautiful and give happiness to everyone. The colors of life are not even like the rainbow. It is much more. It is the beauty of the everyday experiences and the warmth of the people we meet.

At Aaryan Embassy, happiness is part of who we are and joy is the feeling. The outcome.

BALANCE OF NEEDS

Our point is, life is about balance. The good and the bad. The highs and the lows. The luxuries and the needs. When you can get all you need; why worry about luxuries? With all the needs covered up - man can create his own luxury and comfort. And the best part is that luxuries created in this way, are special and customized to each man's tastes.

At Aaryan Embassy, we provide for all the needs - it is up to you to create your own signature luxury.

STROKES OF STATUS

The desire for high status is stronger where 'ordinary' life fails to fulfill the need for dignity and comfort. Even with providing you with all the needs, Aaryan Embassy is not built on just necessary living. It's design and architecture has been conceptualized with express intent to provide a grand stature to all those who call it their 'Home'. The elevations, designs, colors, spaces all of these are testimony to a high class living.

WHY MASTER STROKE

Aaryan Embassy is built as a 'Master Stroke'. How? We believe in providing all the necessary features and aspects to everyday life. Yet, the amenities are really grand. The multi-faceted gym for fitness, yoga and meditation for self-healing, owned park spaces and much more - all of these are centered on the concept of family, easy living and elegant lifestyle.

The beauty of Aaryan Embassy is like a dreamworld, a fantasy. We encourage you to get out there and enjoy it. You only live once and there is something about living in Aaryan Embassy that can balance a person and put their life into perspective. We hope you take up and enjoy this fantastic opportunity of wonderful living.

**aaryan
Embassy**
Life spaces with 3BHK



aaryan
Embassy
Life spaces with 3BHK



aaryan
Embassy
Life spaces with 3BHK





THE JOY OF LIFE

comes from our encounters
with new experiences,

Real joy means immediate expansion. If we experience pure joy,
immediately our heart expands. We feel the freedom of the sky.
The entire length and breadth of the home becomes our world
– not to rule over but to invite others too into this wonderful world.

- ◊ GYM, YOGA, MEDITATION
- ◊ INDOOR GAMING ZONE
- ◊ SENIOR CITIZEN SIT-OUTS
- ◊ CHILDREN PLAY AREA
- ◊ 24 hrs WATER SUPPLY
- ◊ ALLOTTED CAR PARKING FOR EACH MEMBER
- ◊ TRIO / OMEGA OR EQUIVALENT ELEVATOR FOR HIGHEST SAFETY
- ◊ 24 X 7 GATED SECURITY WITH INTERCOM FACILITIES FOR EACH APARTMENT
- ◊ SPACIOUS AND WELL DESIGNED FOYER WITH SITTING ARRANGEMENT

aaryan
Embassy
Life spaces with 3BHK

BASEMENT PLAN

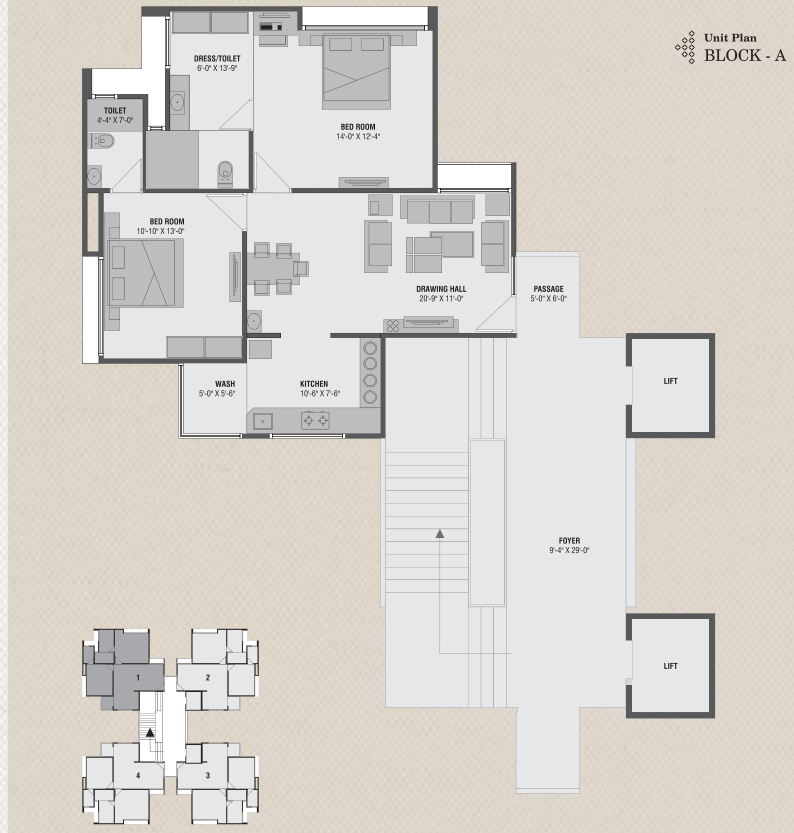


aaryan Embassy
Life spaces with 3BHK

GROUND FLOOR PLAN



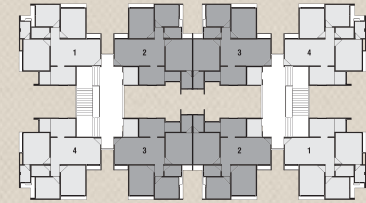
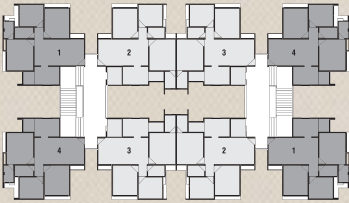
aaryan Embassy
Life spaces with 3BHK



Unit Plan
BLOCK - B & C
Corner Unit



Unit Plan
BLOCK - B & C
Center Unit





aaryan
Embassy
Life spaces with 3BHK



A TRULY
ELEGANT TASTE

IS GENERALLY ACCOMPANIED WITH
EXCELLENCY OF HEART.

SPECIFICATIONS _____

STRUCTURE:

Earth quake resistant R.C.C. frame structure.

KITCHEN:

Ready to use granite finished platform with SS sink, designer glazed tiles with dado up to lintel level and also below the platform. Electrical point for microwave and mixer. Plumbing and electrical provisions for water purifier and chimney.

FLOORING:

Mirror polished vitrified tiles – 600 mm x 600 mm in drawing, dining, kitchen & all bedrooms.

WALLS:

All internal walls will be finished with putty over mala plaster. All external walls will be finished with double coat sand-face plaster with premium quality acrylic paint.

DOORS:

Decorative wooden polished 35 mm thick main entrance door with veneer. All other doors will be wooden framed enamel painted flush doors.

WINDOWS:

Standard quality anodized aluminum sliding window.

TOILETS:

Elegantly designed toilet's with designer tiles with dado up to lintel level.

Sanitaryware & C.P. fittings – Jaquar, Cera or equivalent bathroom fittings.

PLUMBING:

Concealed plumbing with CPVC & UPVC pipes for water supply and premium quality PVC pipes for soil, waste and drainage systems. Borewell with automatic pressure pump distribution system will be installed. Separate water tank for fire safety. Percolation wells as per the norms.

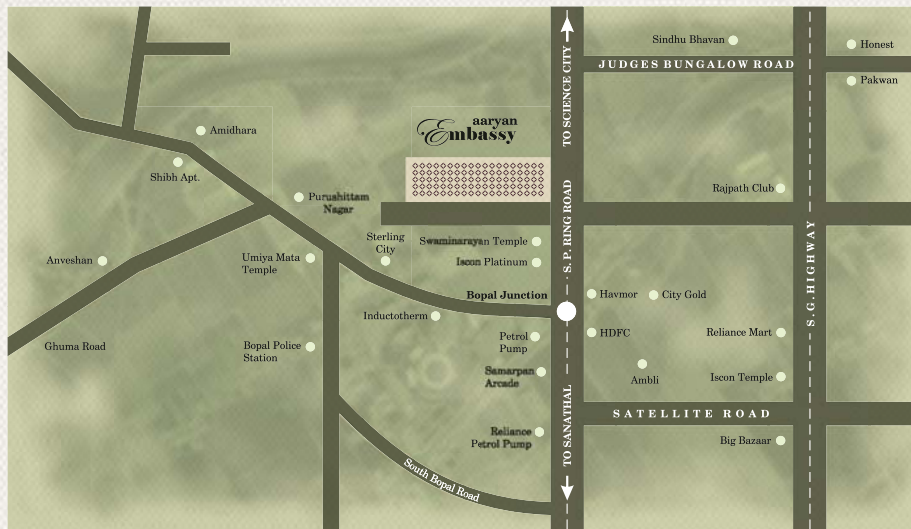
ELECTRIFICATION:

Concealed ISI copper flexible wiring with adequated number of points & branded modular switches, TV, Telephone & AC points in drawing room & 2 bed rooms. Centralized distribution board with MCBs & ELCB for safety protection. Intercom connected to security cabin & all units.

TERRACE:

Open terrace finished with suitable water proofing & china-mosaic flooring for heat reflection and thermal insulation.





LOCATION FEATURES

1.0 KM from BOPAL CROSS ROADS	8.0 KM from SHANTIPURA CIRCLE
2.5 KM from RAJPATH CLUB	5.0 KM from SCIENCE CITY
3.0 KM from SINDHU BHAVAN	5.0 KM from THALTEJ CIRCLE
4.5 KM from ISKON TEMPLE	9.0 KM from GUJARAT HIGH COURT

NOTES:

- All rights for materials and plans remains with the developer.
- This brochure is not a binding document and is meant only for display purpose.
- The developers reserve the right to change or revise the scheme or part of the scheme or any details there of.
- No external changes shall be permitted. Dimensions mentioned here are approximate.



Nr. Swaminarayan Temple, S. P. Ring Road,
Rajpath Club Cross Road,, Ambli, Ahmedabad.
M: 99138 35555 | greenimpactrealty@gmail.com

Architect :
9th Street Architects



This brochure is intended only for easy display and information of the scheme and does not form part of legal document.